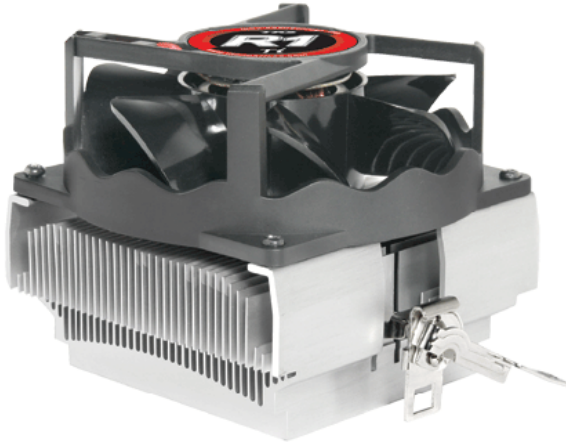




P/N : A4022



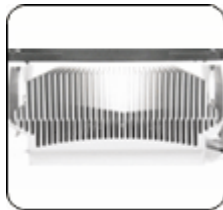
SPECIFICATIONS	
Dimension	(L)96.5 x (W)96.5 x (H)76.3 mm
Fan Dimension	Ø92 x 38 mm
Heat Sink Material	Al Extrusion Heat Sink + Cu Core Inserted
Rated Voltage	12 V
Operating Voltage Range	6.0~13.2 V
Rated Current	0.25 A
Rated Speed	2200 ±10% RPM
Air Flow	42.6 CFM
Static Pressure	2.23 mmH ₂ O
Noise Level	18 dBA
Speed Controlled Type	N/A
Connector	3 Pin
Bearing	One Sleeve
Life Expectancy	30,000 Hours
Weight	497g



Perfect ratio aluminum extrusion heatsink for better heat dissipation



Tool-less clip, easy installation



Silent Solution

FEATURES:

- Perfect ratio aluminum extrusion heatsink for better heat dissipation.
- Tool-less clip, easy installation.
- Silent Solution.
- **6 Years Warranty-** The Enter Bearing offers a 60'000h MTTF at 40°C. Therefore we grant a unique 6 years warranty.

DIMENSION

Unit: mm

